



Corbie Media Library  
60/30 steel shelving with London end panels and top shelving



# LONDON END PANELS, TOPS AND KICKPLATES

The London concept which consists of end panels and top is designed to create a frame around the range of 60/30 steel shelving bays. The concept is available in wood and is now also introduced in steel.

## London wood

London end panel and top are available in 30 mm MDF painted in any colour. London wood is provided with an optional kickplate which is placed below the bottom shelf and will support the framed look. The top is available for 1, 2 or 3 bays. Along the edges of the panel a flat aluminum profile is attached. The aluminium profile is powder coated in the specified colour. The profiles are mounted on the front edge of panels using visible euro screws which are powder coated in the specified colour. The end panels and top are attached to the shelving using powder coated steel brackets. See design options for colour specifications.

## London steel

London end panel and top are available with 30 and 45 mm frontedge and can be powder coated in any colour. The top is available for 1, 2 or 3 bays. The end panels and top are attached to the shelving using powder coated steel brackets. See design options for colour specifications.

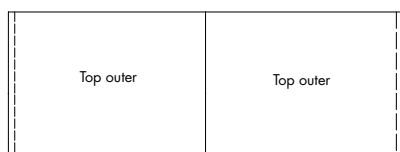
## London top

London wood and London steel tops are available as freestanding, intermediate and outer tops. Freestanding top is always used for 1 bay and can be used up to 3 bays for London Wood and up to 2 bays for London steel. Intermediate and outer tops can be used for 2 or more bays.



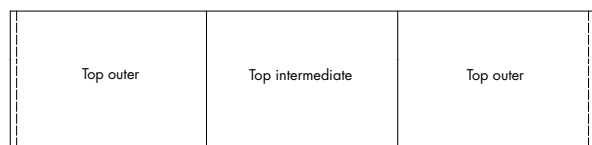
Top freestanding - cover end panels in both ends

Total width cm	London wood & steel 30 mm		London steel 45 mm	
	Module 75	Module 90	Module 75	Module 90
1 bay	82	97	85	30
2 bays	157	187	160	190
3 bays	232	277	N/A	N/A



Top outer - cover end panel in one end

Total width cm	London wood & steel 30 mm		London steel 45 mm	
	Module 75	Module 90	Module 75	Module 90
2 bays	153	183	156	186



Top intermediate - is placed between outer tops

Total width cm	London wood & steel 30 mm		London steel 45 mm	
	Module 75	Module 90	Module 75	Module 90
3 bays	243	273	246	276

For each additional bay/top intermediate total width is increased with 75/90 cm (module 75/90)